



Vestil Manufacturing Co.

2999 North Wayne Street, P.O. Box 507, Angola, IN 46703

Telephone: (260) 665-7586 -or- Toll Free (800) 348-0868

Fax: (260) 665-1339

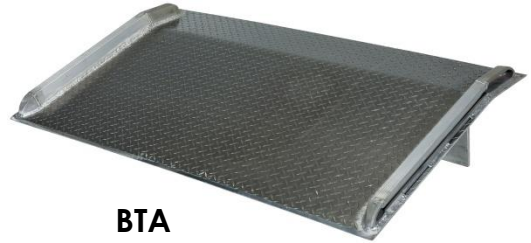
Web: www.vestil.com e-mail: info@vestil.com

ALUMINUM DOCKBOARDS

TS, BTA, SE, & SEH SERIES



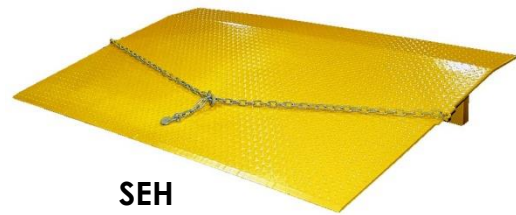
TS



BTA



SE



SEH

Receiving Instructions

After delivery, remove the packaging from the product. Inspect the product closely to determine whether it sustained damage during transport. If damage is discovered, record a complete description of it on the bill of lading. If the product is undamaged, discard the packaging.

NOTE: The end-user is solely responsible for confirming that product design, use, and maintenance comply with laws, regulations, codes, and mandatory standards applied where the product is used.

Technical Service & Replacement Parts

For answers to questions not addressed in these instructions and to order replacement parts, labels, and accessories, call our Technical Service and Parts Department at (260) 665-7586. The Department can also be contacted online at <https://www.vestil.com/page-parts-request.php>.

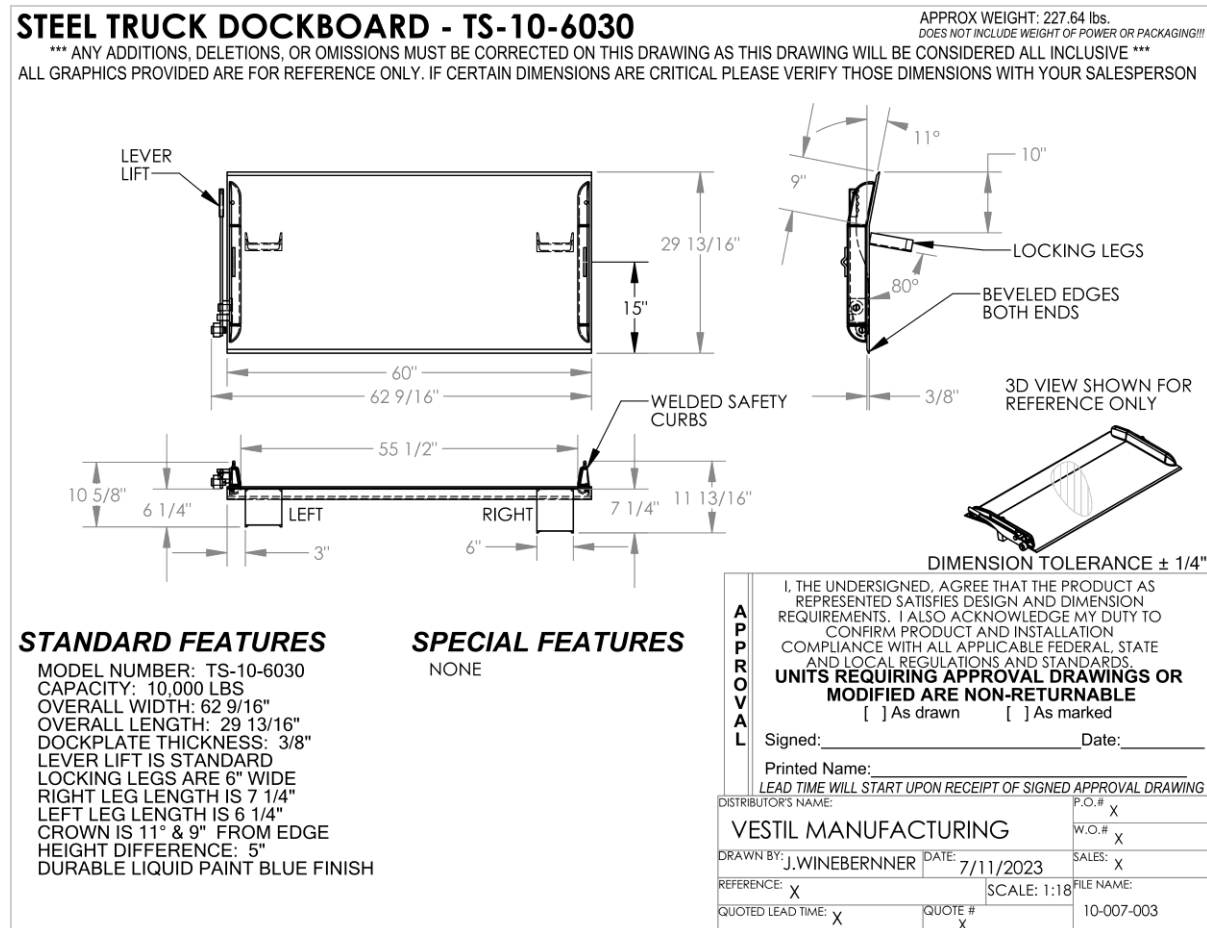
Electronic Copies of Instruction Manuals

Additional copies of this instruction manual may be downloaded from <https://www.vestil.com/page-manuals.php>.

Table of Contents		Page
I. Specifications.....		2
II. Capacity by Model.....		3 - 8
III. Signal Words.....		9
IV. Safety Instructions.....		9
V. Using a Dockboard.....		10
VI. Positioning and Using Your Dockboard.....		11
VII. Record of Satisfactory Condition.....		12
VIII. Inspecting & Maintaining the Dockboard.....		12
X. Labeling Diagram.....		13
XI. Limited Warranty.....		14

I. SPECIFICATIONS

Documents that provide specifications for each model of dockboard are available online to anyone who visits Vestil's website. Specifications include dimensions, net weight, and capacity information. Navigate to <https://www.vestil.com/product.php?FID=35> for BTA series, to <https://www.vestil.com/product.php?FID=38> for SE and SEH series, or to <https://www.vestil.com/product.php?FID=37> for TS-series dockboards. Scroll to the Product Specifications Table portion of the page. Find the entry for the dockboard you purchased and click the button in the "PDF" column that looks like a pencil inside a blue-bordered box. A PDF file will open. This file is the specifications document. Print a copy of the document and keep it with your copy of this manual. The following is an exemplar specifications document for model TS-10-6030.



Pounds to kilograms conversion: 2.2LB. = 1KG

Uniform capacity = Maximum evenly distributed weight the dockboard can support.

Proper selection of TS or BTA series dockboards, which can be used with powered fork trucks:

- Forklifts with 4 wheels: Capacity of dockboard should be 3 times the carrying capacity of the forklift.
- Forklifts with 3 wheels: Capacity of dockboard should be 4 times the carrying capacity of the forklift.

SE and SEH series are dockboards designed for foot traffic, hand trucks, and manual pallet jacks only; not for powered equipment. All models are fully welded (curbs on dockboards, plates on dockboards) with no user assembly required and comply with OSHA 1910.26 and ANSI MH30.2 standards for portable dockboards. DO NOT exceed the load ratings!

II. CAPACITY BY MODEL

A. TS Series (Steel Dockboards with Welded Steel Curbs)

Model	Dimensions (W x L)	Uniform Capacity (lb.)	Height Difference at 11°/19% (in.)	Net Weight (lb.)
TS-10-6030	60" x 30"	10,000	4	256
TS-10-6036	60" x 36"	10,000	5	263
TS-10-6048	60" x 48"	10,000	7	388
TS-10-6060	60" x 60"	10,000	10	457
TS-10-6072	60" x 72"	10,000	12	535
TS-10-7236	72" x 36"	10,000	5	300
TS-10-7248	72" x 48"	10,000	7	391
TS-10-7260	72" x 60"	10,000	10	563
TS-10-7272	72" x 72"	10,000	12	721
TS-15-6030	60" x 30"	15,000	4	276
TS-15-6036	60" x 36"	15,000	5	295
TS-15-6048	60" x 48"	15,000	7	390
TS-15-6060	60" x 60"	15,000	10	458
TS-15-6072	60" x 72"	15,000	12	601
TS-15-7236	72" x 36"	15,000	5	347
TS-15-7248	72" x 48"	15,000	7	443
TS-15-7260	72" x 60"	15,000	10	581
TS-15-7272	72" x 72"	15,000	12	668
TS-20-6036	60" x 36"	20,000	5	303
TS-20-6048	60" x 48"	20,000	7	433
TS-20-6060	60" x 60"	20,000	10	582
TS-20-6072	60" x 72"	20,000	12	791
TS-20-7236	72" x 36"	20,000	5	390
TS-20-7248	72" x 48"	20,000	7	512
TS-20-7260	72" x 60"	20,000	10	655
TS-20-7272	72" x 72"	20,000	12	919
TS-20-8448	84" x 48"	20,000	7	556
TS-20-8460	84" x 60"	20,000	10	742
TS-25-6036	60" x 36"	25,000	5	447
TS-25-6048	60" x 48"	25,000	7	562
TS-25-6060	60" x 60"	25,000	10	695
TS-25-6072	60" x 72"	25,000	12	791
TS-25-7236	72" x 36"	25,000	5	437
TS-25-7248	72" x 48"	25,000	7	651
TS-25-7260	72" x 60"	25,000	10	807
TS-25-7272	72" x 72"	25,000	12	859
TS-25-8448	84" x 48"	25,000	7	741

NOTES: Pounds to kilograms conversion: 2.2LB. = 1KG.

Uniform capacity = Max. evenly distributed weight the product can support.

TS series are dockboards designed for use with powered fork trucks. *If a 3-wheeled powered fork truck is used, a dockboard must have a capacity that is 4 times the load rating of the fork truck.* If 4 wheeled forklifts are used, a dockboard should have a capacity of 3 times the load rating of the forklift.

All models are fully welded (curbs on dockboards, plates on dockplates). No assembly required.

B. BTA Series (Aluminum Dockboards with Welded Aluminum Curbs)**Read NOTES on p. 7.**

Model	Width (in.)	Length (in.)	Uniform Capacity (lb.)	Height Difference at 8°/17% (in.)	Net Weight (lb.)
BTA-05005454	54	54	5,000	6	117
BTA-05005466	54	66	5,000	8	134
BTA-05005478	54	78	5,000	9	168
BTA-05006030	60	30	5,000	3	72
BTA-05006036	60	36	5,000	4	82
BTA-05006048	60	48	5,000	5-1/2	105
BTA-05006060	60	60	5,000	7	133
BTA-05006072	60	72	5,000	8-1/2	163
BTA-05006660	66	60	5,000	7	126
BTA-05006666	66	66	5,000	8	135
BTA-05006672	66	72	5,000	8-1/2	171
BTA-05007230	72	30	5,000	3	85
BTA-05007236	72	36	5,000	4	92
BTA-05007242	72	42	5,000	5	111
BTA-05007248	72	48	5,000	5-1/2	152
BTA-05007254	72	54	5,000	6	171
BTA-05007260	72	60	5,000	7	195
BTA-05007266	72	66	5,000	8	212
BTA-05007272	72	72	5,000	8-1/2	281
BTA-05007830	78	30	5,000	3	156
BTA-05007836	78	36	5,000	4	164
BTA-05007842	78	42	5,000	5	173
BTA-05007854	78	54	5,000	6	212
BTA-05007866	78	66	5,000	8	255
BTA-05007872	78	72	5,000	8-1/2	267
BTA-05008430	84	30	5,000	3	94
BTA-05008442	84	42	5,000	5	116
BTA-05008454	84	54	5,000	6	182
BTA-05008466	84	66	5,000	8	275
BTA-06005430	54	30	6,000	3	65
BTA-06005442	54	42	6,000	5	102
BTA-06005454	54	54	6,000	6	118
BTA-06005466	54	66	6,000	8	144
BTA-06005478	54	78	6,000	9	185
BTA-06005484	54	84	6,000	10	201
BTA-06006054	60	54	6,000	6	132
BTA-06006060	60	60	6,000	7	144
BTA-06006072	60	72	6,000	8-1/2	164
BTA-06006084	60	84	6,000	10	185
BTA-06006636	66	36	6,000	4	150
BTA-06006642	66	42	6,000	5	179
BTA-06006648	66	48	6,000	5-1/2	208
BTA-06006654	66	54	6,000	6	236
BTA-06006660	66	60	6,000	7	241
BTA-06006666	66	66	6,000	8	258

Model	Width (in.)	Length (in.)	Uniform Capacity (lb.)	Height Difference at 8°/17% (in.)	Net Weight (lb.)
BTA-06006672	66	72	6,000	8-1/2	279
BTA-06007236	72	36	6,000	4	91
BTA-06007242	72	42	6,000	5	111
BTA-06007254	72	54	6,000	6	165
BTA-06007266	72	66	6,000	8	289
BTA-06007830	78	30	6,000	3	149
BTA-06007836	78	36	6,000	4	158
BTA-06007842	78	42	6,000	5	166
BTA-06007848	78	48	6,000	5-1/2	171
BTA-06007854	78	54	6,000	6	178
BTA-06007860	78	60	6,000	7	186
BTA-06007866	78	66	6,000	8	192
BTA-06007872	78	72	6,000	8-1/2	201
BTA-06008430	84	30	6,000	3	205
BTA-06008436	84	36	6,000	4	209
BTA-06008442	84	42	6,000	5	214
BTA-06008448	84	48	6,000	5-1/2	218
BTA-06008454	84	54	6,000	6	224
BTA-06008460	84	60	6,000	7	235
BTA-06008466	84	66	6,000	8	248
BTA-06008472	84	72	6,000	8-1/2	255
BTA-07005454	54	54	7,000	6	121
BTA-07005466	54	66	7,000	8	155
BTA-07006066	60	66	7,000	8	168
BTA-07006630	66	30	7,000	3	90
BTA-07006636	66	36	7,000	4	95
BTA-07006642	66	42	7,000	5	106
BTA-07006654	66	54	7,000	6	144
BTA-07006666	66	66	7,000	8	157
BTA-07007230	72	30	7,000	3	130
BTA-07007236	72	36	7,000	4	145
BTA-07007248	72	48	7,000	5-1/2	163
BTA-07007254	72	54	7,000	6	173
BTA-07007272	72	72	7,000	8-1/2	220
BTA-07007830	78	30	7,000	3	162
BTA-07007842	78	42	7,000	5	215
BTA-07007848	78	48	7,000	5-1/2	220
BTA-07007854	78	54	7,000	6	225
BTA-07007860	78	60	7,000	7	228
BTA-07007866	78	66	7,000	8	231
BTA-07007872	78	72	7,000	8-1/2	242
BTA-07008430	84	30	7,000	3	173
BTA-07008436	84	36	7,000	4	201
BTA-07008442	84	42	7,000	5	225
BTA-07008454	84	54	7,000	6	248
BTA-07008460	84	60	7,000	7	235
BTA-12006066	60	66	12,000	8	275

Model	Width (in.)	Length (in.)	Uniform Capacity (lb.)	Height Difference at 8°/17% (in.)	Net Weight (lb.)
BTA-12006078	60	78	12,000	9	292
BTA-12006642	66	42	12,000	5	188
BTA-12006648	66	48	12,000	5-1/2	204
BTA-12006654	66	54	12,000	6	235
BTA-12006660	66	60	12,000	7	254
BTA-12006666	66	66	12,000	8	312
BTA-12006672	66	72	12,000	8-1/2	322
BTA-12007230	72	30	12,000	3	144
BTA-12007242	72	42	12,000	5	205
BTA-12007254	72	54	12,000	6	257
BTA-12007266	72	66	12,000	8	318
BTA-12007830	78	30	12,000	3	177
BTA-12007836	78	36	12,000	4	195
BTA-12007842	78	42	12,000	5	222
BTA-12007848	78	48	12,000	5-1/2	233
BTA-12007854	78	54	12,000	6	255
BTA-12007860	78	60	12,000	7	273
BTA-12007866	78	66	12,000	8	352
BTA-12008430	84	30	12,000	3	145
BTA-12008454	84	54	12,000	6	268
BTA-12008466	84	66	12,000	8	275
BTA-15005436	54	36	15,000	4	151
BTA-15005448	54	48	15,000	5-1/2	208
BTA-15005472	54	72	15,000	8-1/2	308
BTA-15006036	60	36	15,000	4	141
BTA-15006048	60	48	15,000	5-1/2	180
BTA-15006060	60	60	15,000	7	235
BTA-15006066	60	66	15,000	8	256
BTA-15006072	60	72	15,000	8-1/2	284
BTA-15006636	66	36	15,000	4	151
BTA-15006642	66	42	15,000	5	183
BTA-15006666	66	66	15,000	8	280
BTA-15006672	66	72	15,000	8-1/2	306
BTA-15007236	72	36	15,000	4	162
BTA-15007242	72	42	15,000	5	191
BTA-15007248	72	48	15,000	5-1/2	212
BTA-15007260	72	60	15,000	7	269
BTA-15007266	72	66	15,000	8	304
BTA-15007272	72	72	15,000	8-1/2	386
BTA-15007836	78	36	15,000	4	213
BTA-15007842	78	42	15,000	5	220
BTA-15007866	78	66	15,000	8	401
BTA-15008442	84	42	15,000	5	252
BTA-15008466	84	66	15,000	8	365
BTA-20006036	60	36	20,000	4	177
BTA-20006048	60	48	20,000	5-1/2	206
BTA-20006054	60	54	20,000	6	250

Model	Width (in.)	Length (in.)	Uniform Capacity (lb.)	Height Difference at 8°/17% (in.)	Net Weight (lb.)
BTA-20006060	60	60	20,000	7	278
BTA-20006066	60	66	20,000	8	305
BTA-20006072	60	72	20,000	8-1/2	357
BTA-20006630	66	30	20,000	3	184
BTA-20006636	66	36	20,000	4	192
BTA-20006642	66	42	20,000	5	204
BTA-20006654	66	54	20,000	6	261
BTA-20006660	66	60	20,000	7	265
BTA-20006672	66	72	20,000	8-1/2	274
BTA-20007236	72	36	20,000	4	195
BTA-20007248	72	48	20,000	5-1/2	228
BTA-20007254	72	54	20,000	6	304
BTA-20007260	72	60	20,000	7	326
BTA-20007266	72	66	20,000	8	338
BTA-20007272	72	72	20,000	8-1/2	350
BTA-20007830	78	30	20,000	3	215
BTA-20007836	78	36	20,000	4	235
BTA-20007842	78	42	20,000	5	241
BTA-20008454	84	54	20,000	6	380

NOTES: Pounds to kilograms conversion: 2.2LB. = 1KG.

Uniform capacity = Max. evenly distributed weight the product can support.

BTA series are dockboards designed for use with powered fork trucks. *If a 3-wheeled powered fork truck is used, a dockboard must have a capacity that is 4 times the load rating of the fork truck.* If 4 wheeled forklifts are used, a dockboard should have a capacity of 3 times the load rating of the forklift.

All models are fully welded (curbs on dockboards, plates on dockplates). No assembly required.

C. SE Series (Standard Strength Steel Dockplates)

Model	Width (in.)	Length (in.)	Height (in.)	Uniform Capacity (lb.)	Net Weight (lb.)
SE-4830	30	48	7-9/16	5,000	177
SE-4836	36	48	8-9/16	4,125	215
SE-4848	48	48	9-9/16	3,090	324
SE-4860	60	48	12-1/2	2,475	341
SE-6036	36	60	8-9/16	5,150	261
SE-6048	48	60	9-9/16	3,860	362
SE-6060	60	60	12-1/2	3,090	498
SE-7230	30	72	7-9/16	7,720	289
SE-7236	36	72	8-9/16	6,430	303
SE-7248	48	72	9-9/16	4,820	413
SE-7260	60	72	12-1/2	3,860	475

D. SEH Series (High Strength Steel Dockplates)

Model	Width (in.)	Length (in.)	Height (in.)	Uniform Capacity (lb.)	Net Weight (lb.)
SEH-4830	30	48	7-11/16	8,800	227
SEH-4836	36	48	8-11/16	7,300	263
SEH-4848	48	48	9-11/16	5,500	429
SEH-4860	60	48	12-5/8	4,400	528
SEH-6036	36	60	8-11/16	9,160	317
SEH-6048	48	60	9-11/16	6,875	445
SEH-6060	60	60	12-5/8	5,500	554
SEH-7230	30	72	7-11/16	13,200	369
SEH-7236	36	72	8-11/16	11,000	385
SEH-7248	48	72	9-11/16	8,250	528
SEH-7260	60	72	12-5/8	6,600	627

NOTES: Pounds to kilograms conversion: 2.2LB. = 1KG




Uniform capacity = Maximum evenly distributed weight the product can support.

SE and SEH series are dockplates designed for foot traffic, hand trucks, and manual pallet jacks only; not for powered equipment.

All models are fully welded (curbs on dockboards, plates on dockplates). No assembly required.

III. SIGNAL WORDS

SIGNAL WORDS in this manual are meant to draw the reader's attention to important safety-related messages.

 DANGER	Identifies a hazardous situation which, if not avoided, <u>WILL</u> result in DEATH or SERIOUS INJURY . Use of this signal word is limited to the most extreme situations.
 WARNING	Identifies a hazardous situation which, if not avoided, COULD result in DEATH or SERIOUS INJURY .
 CAUTION	Indicates a hazardous situation which, if not avoided, COULD result in MINOR or MODERATE injury.
NOTICE	Identifies practices likely to result in product/property damage, such as operation that might damage the product.

IV. SAFETY INSTRUCTIONS

Vestil strives to identify foreseeable hazards associated with the use of its products. However, no manual can address every conceivable risk. To minimize the likelihood of being injured as a result of using this device, inspect and maintain the product as instructed in section VIII. INSPECTING & MAINTAINING... Apply good judgment when using this device.

WARNING

Risks of serious personal injuries or death.

- Read this manual in its entirety before using, inspecting, or servicing the product. A copy of this manual should always be available to any person who uses, inspects, or maintains this dockboard.
- DO NOT use SE or SEH series with powered equipment such as fork trucks; these are designed only for foot traffic, hand trucks, or manual pallet jacks. TS and BTA series dockboards are suitable for powered fork trucks. Read section I. [Specifications](#), **Proper selection of TS or BTA series dockboards, p. 2**, to be sure that your dockboard is suitable for your application.
- Inspect the dockboard as instructed in section VIII. [INSPECTING & MAINTAINING YOUR DOCKBOARD](#) on p. 12. Remove the dockboard from service if an inspection reveals changes from SATISFACTORY CONDITION. DO NOT use the dockboard until it is restored to satisfactory condition. ONLY use manufacturer-approved replacement parts to repair your dockboard.
- DO NOT use a damaged dockboard. ONLY use a dockboard that is in satisfactory condition. See section VII. [RECORD OF SATISFACTORY CONDITION](#) on p. 12; also see INSPECTING AND MAINTAINING YOUR DOCKBOARD on p. 12.
- ONLY qualified maintenance personnel should maintain and repair this product. An improperly maintained dockboard could become unsafe to use.
- ONLY use a dockboard on structurally sound loading dock surfaces (e.g. concrete, steel) that are even & level. DO NOT use this dockboard to bridge uneven or sloping surfaces.
- DO NOT use a dockboard unless all labels are in place, undamaged, and easily readable from a reasonable, safe distance. DO NOT remove or obscure labels.
- DO NOT modify this dockboard in any way. Modifications automatically void the [LIMITED WARRANTY](#) (see section X. on p. 14) and might make the dockboard unsafe to use.
- Ensure the dockboard is properly positioned and legs are locked before use. The lip must rest securely on the trailer bed, extending at least 4-6 inches.
- Comply with OSHA 1910.26 and ANSI MH30.2 standards for portable dockboards.
- Practice proper lifting techniques when manually handling dockboards. Use hand holds or lifting chains/loops.

NOTICE

Proper use, maintenance, and storage are essential for this product to function properly.

- Always use this product in accordance with the instructions in this manual and consistent with any training relevant to machines, devices, etc. used in conjunction with this product.
- Keep the product clean & dry. Store it in an indoor location.

V. USING A DOCKBOARD

Personnel with experience loading and unloading trailers should determine the appropriate use of dockboards on a case-by-case basis, including the optimal positioning. Compelling reasons to use dockboards include, but are not limited to:

- Bridging gaps between a loading dock & a trailer bed.
- Providing a strong, skid-resistant transition for hand trucks or pallet jacks.
- Enhancing safety during manual material handling operations.

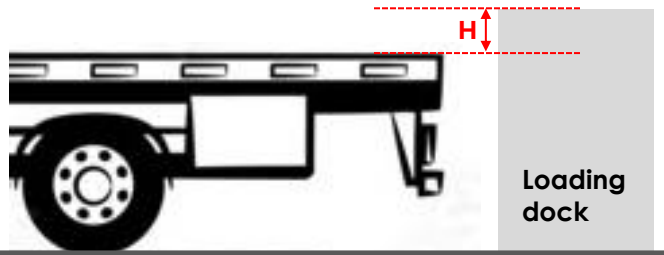
Dockboards are portable and feature two leg brackets for secure placement. Each trailer should be parked at a loading dock with wheels chocked to prevent movement. SE and SHE-series dockboards are not designed for powered fork trucks and must and must only be used with foot traffic, hand trucks, or manual pallet jacks. TS and BTA series are suitable for powered fork trucks. NEVER use a dockboard unless it is structurally sound, stable (doesn't wobble or slide while in use), and both legs extend into the gap between the loading dock and trailer bed. The legs must project below the lower of the 2 bridged surfaces.

Before using a dockboard, inspect it as described in section VIII. [INSPECTING & MAINTAINING THE DOCKBOARD](#) section on p. 12. Confirm the dockboard is in satisfactory condition before use.

Be aware of your dockboard's load rating. Load ratings (capacities) are provided in on-product labeling as well as in section 1. [SPECIFICATIONS](#) section on p. 2. See section X. [LABELING DIAGRAM](#) on p. 14. Uniform capacity = maximum evenly distributed weight the dockboard can support. DO NOT exceed the load rating!

Before installing a dockboard:

1. Immobilize the trailer with wheel chocks.
2. The surface on which the dockboard will be used must be even, level, intact concrete or similar. Asphalt is not recommended as it may compress.
3. Confirm that the dock and trailer bed are structurally sound, even, and level where the dockboard will contact them. Do not use the dockboard if either surface is unsound.
4. Ensure the height differential between the loading dock and trailer bed does not exceed the recommended limit for your dockboard. The maximum height difference depends on the last 2 digits of the model name of your dockboard, which correspond to the width of the dockboard in inches (e.g. TS-10-6030; BTA-05005454; SE-4830; & SEH-4830) as indicated in the applicable table:



Last 2 Digits of TS-Series Model Name

	30	36	42"	48	54	60	66	72	78	84
Max. height difference (H)	4"	5"	N/A	7"	N/A	10"	N/A	12"	N/A	N/A

Last 2 Digits of BTA-Series Model Name

	30	36	42"	48	54	60	66	72	78	84
Max. height difference (H)	3"	4"	5"	5.5"	6"	7"	8"	8.5"	9"	10"

Last 2 Digits of SE-Series Model Name

	30	36	42"	48	54	60	66	72	78	84
Max. height difference (H)	4"	5"	N/A	7"	N/A	9"	N/A	N/A	N/A	N/A

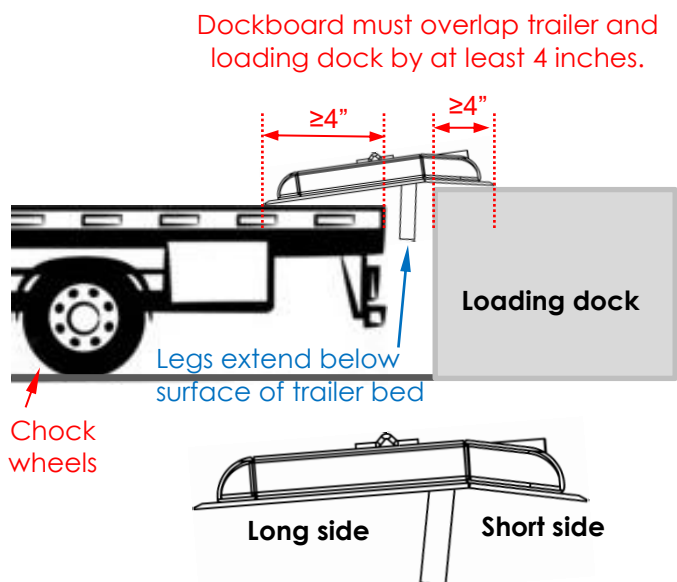
Last 2 Digits of SEH-Series Model Name

	30	36	42"	48	54	60	66	72	78	84
Max. height difference (H)	4"	5"	N/A	7"	N/A	9"	N/A	N/A	N/A	N/A

VI. POSITIONING AND USING YOUR DOCKBOARD

Watch the videos at https://youtu.be/O_5lVaq5RVY & https://youtu.be/O_5lVaq5RVY

1. Confirm the trailer is chocked and stable.
2. Move the dockboard into position:
 - a. The legs of TS and BTA series dockboards are differing lengths. This lifts one corner of the front edge of the dockboard off of the ground. This is done to make it easier to slide the forks of a lift truck under the dockboard. TS series boards also include a pivoting lever near one corner. Pull the lever to the vertical position to lift the corresponding corner off of the ground and further facilitate pickup with a fork truck.
 - b. SE and SHE series dockboards include 2 chains with hooks. Bring the two chains together over the dockboard by joining the hooks. Forks of a lift truck can be inserted between the dockboard and the joined chains to lift and transport the dockboard.
3. TS, BTA, SE, and SEH series dockboards include curbs welded along their side edges. Curbs assist with keeping vehicles from driving off of the side of a dockboard. Some models can be carried by grasping one of the side curbs. Heavy models should only be transported by lift truck.
4. Each dockboard includes an 11-degree bend. This bend allows a dockboard to provide a stable transition between surfaces of differing heights.
5. Position the dockboard to span the gap between your loading dock and trailer bed.
 - a. SE and SHE models: Unhook the chains and move them off the sides of the dockboard.
 - b. The short side of the dockboard should be placed on the *higher surface* and the longer side on the lower surface. In the diagram to the right, the loading dock is higher than the bed of the trailer, so the short side of the dockboard rests on the loading dock.
 - c. Confirm both legs extend into the gap between the dock and the trailer bed and **below the level of the lower surface** (trailer bed in the diagram). This is critical to secure the dockboard in place during use.
 - d. Confirm that **both ends of the dockboard overlap the vehicle/trailer bed and the loading dock by at least 4 inches ($\geq 4"$)**.
 - e. Confirm the dockboard is stable before using/traversing it.
 - f. Do not use if unstable or if height differential exceeds design limits. See tables on p. 10.
6. Use the dockboard to conduct loading and/or unloading operations. Beveled edges along the entry and exit edges provide smooth transitions from the loading dock surface and trailer bed onto the dockboard.
7. When loading/unloading operations are finished and BEFORE the trailer drives away from the dock, move the dockboard to its designated storage site. Lift it using one of the side curbs and carry it, or use a fork lift to transport the dockboard. If using a TS-series dockboard, use the side lever to lift the corner of the board off of the surface and make it easier for the forklift to pick it up. NOTE: An optional dockboard storage rack, [model DPR-2616](#), can be used for this purpose.



VII. RECORD OF SATISFACTORY CONDITION

Record the condition of the dockboard before putting it into service for the first time. Include observations about all features, including curbs, legs, tread plate, welds, bends, fasteners, and labels. Thoroughly photograph the unit so that all features are clearly imaged. Collect all writings, recordings, and photographs in a file. This file is a Record of the unit in satisfactory condition. During all future inspections, compare the condition of your dockboard to the Record to determine if the unit is in satisfactory condition. See section VIII. [INSPECTING & MAINTAINING THE DOCKBOARD](#) section below.

VIII. INSPECTING & MAINTAINING THE DOCKBOARD (ALL MODELS)

Inspections and repairs should only be performed by qualified persons. Compare the results of each inspection to the [RECORD OF SATISFACTORY CONDITION](#) (the "RECORD"). Do not use the dockboard unless all parts are in satisfactory condition. Replace parts that are not in satisfactory condition before using the dockboard again. DON'T GUESS! If you have any questions about the condition of your dockboard, speak with [TECHNICAL SERVICE](#) personnel. The phone number is provided on the cover page of this manual.

Never make temporary repairs of damaged or missing parts. Only use manufacturer-approved replacement parts.

Make a dated record of each inspection that includes a written account of your observations as well as a description of repairs made.

(A) Each day inspect the dockboard for the following conditions:

1. Visible damage to the plate, legs, or curbs.
2. Legs securely fastened to dockboard.
3. Any condition that can cause dockboard to be unstable during use.

(B) At least once per month, inspect the following components. DO NOT use the dockboard until it is restored to satisfactory condition.

1. Tread plate:
 - a) Inspect for wear, cracks, or other damage: If the plate is deformed or tread is worn, remove the dockboard from service and replace it.
 - b) Clean tread to maintain skid resistance.
2. Legs: Legs should be solidly welded to the underside of the dockboard. Check each leg for cracks, bends, warps, and for significant rusting/corrosion.
3. Curbs: Examine for damage (breaks, cracks, etc.) or looseness.
4. Welds and bends: Check for cracks, fatigue, and significant rust/corrosion.
5. Overall structure: Ensure no deformation; plate should be flat except for a single, designed bend.
6. Labels (refer to section XI. [LABELING DIAGRAM](#) on p. 14): The dockboard should be labeled at all times as shown in the diagram. Replace any label that is missing, damaged, or not easily readable (e.g. faded or worn).

IX. LABELING DIAGRAM

Label content and location are subject to change. Your product might not be labeled exactly as shown in the diagram below. If the labels applied to your unit differ from those shown in the diagram, contact [TECHNICAL SERVICE](#) and report the inconsistency. Thoroughly photograph the unit when you first receive it as discussed in section VII. [RECORD OF SATISFACTORY CONDITION](#) on p. 12. Make sure that your Record includes at least 1 photograph of each label. Replace all labels that are, or later become, damaged, missing, or not easily readable (e.g. faded). To order replacement labels, contact the [TECHNICAL SERVICE & PARTS DEPARTMENT](#) online at <https://www.vestil.com/page-parts-request.php> or by calling (260) 665-7586 and asking the operator to connect you to the PARTS DEPARTMENT.



TS-Series Dockboards: A, B, C, & D



BTA-Series Dockboards: A, B & C



SE-Series Dockboards: A, B, & C



SE-Series Dockboards: A, B, & C



A: TAG 003 - UNDERSIDE

FORK LIFT TRUCK-50%	SINGLE AXLE CAPACITY	MAX. HEIGHT DIFFERENCE UP OR DOWN NOT TO EXCEED 10%
PALLETT TRUCK-60%		
PLATFORM TRUCK-50%		
MONTACARGAS-50%	CAPACIDAD PARA UN EJE	DIFERENCIA MÁXIMA DE ALTURA HACIA ARRIBA O HACIA ABAJO PULGADAS O CENTÍMETROS
TRANSPORTE-60%		
CAMION DE PLATAFORMA-50%		
CHARIOT MONTÉ- CHARGE-50%	CAPACITÉ DE L'ESSEIN SEULEMENT	DIFFÉRENCE MAXIMUM DE HAUTEUR EN HAUT (U) EN BAS POUCHES EN CENTIMÈTRES
CHARIOT MONTÉ- PALETTE-60%		
CAMION A PLATE- FORME-50%		

320
100-1000

VESTIL MANUFACTURING CORPORATION
P.O. Box 807, Angola, IN 46703 USA
Phone (260) 665-7586 • Fax (260) 665-1339
sales@vestil.com • www.vestil.com

**B: Label 949 – ON
FRONT OF A
LEG. DATA FIELDS
FILLED MANUALLY**

CAUTION
OPERATING/POSITIONING INSTRUCTIONS
1. ALWAYS PLACE END "Y" OF DOCKBOARD ON HIGHER SURFACE. 2. END MUST HAVE FULL CONTACT ON BOTH DOCK & VEHICLE BED. 3. DO NOT FORCE DOCKBOARD IN OR OUT OF OPERATING POSITION. 4. APPROACH AND DRIVE OVER DOCKBOARD AT LOW SPEED. 5. DIRECT DOCKBOARD FORWARD AND BACK BEFORE EACH USAGE. 6. DO NOT LIFT MANUALLY BY THE FORKLIFT OR OTHER MEANS. 7. NOT FOR USE WITH RAIL CARS. 8. FOR RAIL CAR CAPACITY, MULTIPLY TOTAL WEIGHT OF INDUSTRIAL TRUCK AND LOAD BY THE PERCENTAGE ON CAPACITY LABEL.
ATENCIÓN
INSTRUCCIONES DE OPERACIÓN Y POSICIONAMIENTO
1. SIEMPRE COLOQUE EL EXTREMUM "Y" DEL NIVELADOR EN LA SUPERFICIE MÁS ELEVADA. 2. LOS EXTREMOS DEBEN TENER CONTACTO TOTAL, TANTO EN EL ANCHO COMO EN EL LARGO. 3. NO FUERCE EL NIVELADOR A LA POSICIÓN DE OPERACIÓN O FUERA DE ELLA. 4. ACERQUESE Y PASE SOBRE EL NIVELADOR A BAJA VELOCIDAD. 5. REVERSE CONTRA CORRIENTE DEL NIVELADOR ANTES DE CADA USO. 6. NO CUIDANTE EL NIVELADOR MANUALLY POR MEDIO DE LA FORK LIFT O OTRO MEDIO. 7. NO USE CON CARGAS DE RAILES. 8. PARA CARGAS DE RAILES, MULTIPLIQUE EL PESO TOTAL DEL CAMIÓN Y LA CARGA POR EL PORCENTAJE DE LA ETIQUETA DE CAPACIDAD.
ATTENTION
INSTRUCTIONS DE FONCTIONNEMENT ET DE POSITIONNEMENT
1. TOUJOURS PLACER L'EXTREMITÉ "Y" DU DOCKBOARD SUR LA SURFACE LA PLUS ÉLEVÉE. 2. LES EXTRÉMITÉS DOIVENT ÊTRE EN PLEIN CONTACT AVEC LE QUAI ET LA PLATE-BANDE DU VÉHICULE. 3. NE PAS FORCER LE DOCKBOARD À SORTIR DE LA POSITION DE FONCTIONNEMENT. 4. APPROCHER ET CONDUIRE SUR LE DOCKBOARD À VITESSE LENTE. 5. INSPECTER LE DOCKBOARD POUR TOUT DOMMAGE AVANT CHAQUE USAGE. 6. NE PAS LÉVER MANUELLEMENT. UTILISER UN MONTÉ-CHARGE OU D'AUTRES MOYENS DE LEVAGE. 7. NE PAS UTILISER AVEC DES WAGONS. 8. POUR LA CAPACITÉ DE L'ESSEIN SEULEMENT, MULTIPLIER LE POIDS TOTAL DU CAMION ET SA CHARGE PAR LE POURCENTAGE TROUVÉ SUR L'ÉTIQUETTE DE CAPACITÉ.
VESTIL MANUFACTURING CORPORATION Phone (260) 665-7586 • Fax (260) 665-1339 • sales@vestil.com • www.vestil.com

**C: Label 321 – ON
FRONT OF A LEG.
DATA FIELDS FILLED**

**D: Label 611, 612, 613, 614, OR
615 – ON INSIDE OF A CURB.**

CAPACITY / CAPACIDAD / CAPACITÉ
10,000 LBS. / 4535 KGS.

611

CAPACITY / CAPACIDAD / CAPACITÉ
25,000 LBS. / 11339 KGS.

612

CAPACITY / CAPACIDAD / CAPACITÉ
15,000 LBS. / 6803 KGS.

613

CAPACITY / CAPACIDAD / CAPACITÉ
20,000 LBS. / 9071 KGS.

614

CAPACITY / CAPACIDAD / CAPACITÉ
30,000 LBS. / 13607 KGS.

615



X. LIMITED WARRANTY

Vestil Manufacturing Company ("Vestil") warrants this product to be free of defects in material and workmanship during the warranty period. Our warranty obligation is to provide a replacement for a defective, original part covered by the warranty after we receive a proper request from the Warrantee (you) for warranty service.

Who may request service?

Only a warrantee may request service. You are a warrantee if you purchased the product from Vestil or from an authorized distributor AND Vestil has been fully paid.

Definition of "original part"?

An original part is a part used to make the product as shipped to the Warrantee.

What is a "proper request"?

A request for warranty service is proper if Vestil receives: 1) a photocopy of the Customer Invoice that displays the shipping date; AND 2) a written request for warranty service including your name and phone number. Send requests by one of the following methods:

US Mail
Vestil Manufacturing Company
2999 North Wayne Street, PO Box 507
Angola, IN 46703

Fax
(260) 665-1339
Phone
(260) 665-7586

Email
info@vestil.com
Enter "Warranty service request"
in subject field.

In the written request, list the parts believed to be defective and include the address where replacements should be delivered. After Vestil receives your request for warranty service, an authorized representative will contact you to determine whether your claim is covered by the warranty. Before providing warranty service, Vestil will require you to send the entire product, or just the defective part (or parts), to its facility in Angola, IN.

What is covered under the warranty?

The warranty covers defects in the following original, dynamic parts: motors, hydraulic pumps, motor controllers, and cylinders. It also covers defects in original parts that wear under normal usage conditions ("wearing parts"), such as bearings, hoses, wheels, seals, brushes, and batteries.

How long is the warranty period?

The warranty period for original dynamic components is 90 days. For wearing parts, the warranty period is 90 days. Both warranty periods begin on the date Vestil ships the product to the Warrantee. If the product was purchased from an authorized distributor, the periods begin when the distributor ships the product. Vestil may, at its sole discretion, extend a warranty period for products shipped from authorized distributors by up to 30 days to account for shipping time.

If a defective part is covered by the warranty, what will Vestil do to correct the problem?

Vestil will provide an appropriate replacement for any covered part. An authorized representative of Vestil will contact you to discuss your claim.

What is not covered by the warranty?

The Warrantee (you) are responsible for paying labor costs and freight costs to return the product to Vestil for warranty service.

Events that automatically void this Limited Warranty.

- Misuse;
- Negligent assembly, installation, operation or repair;
- Installation/use in corrosive environments;
- Inadequate or improper maintenance;
- Damage sustained during shipping;
- Collisions or other accidents that damage the product;
- Unauthorized modifications: Do not modify the product IN ANY WAY without first receiving written authorization from Vestil.

Do any other warranties apply to the product?

Vestil Manufacturing Co. makes no other express warranties. All implied warranties are disclaimed to the extent allowed by law. Any implied warranty not disclaimed is limited in scope to the terms of this Limited Warranty. Vestil makes no warranty or representation that this product complies with any state or local design, performance, or safety code or standard. Noncompliance with any such code or standard is not a defect in material or workmanship.